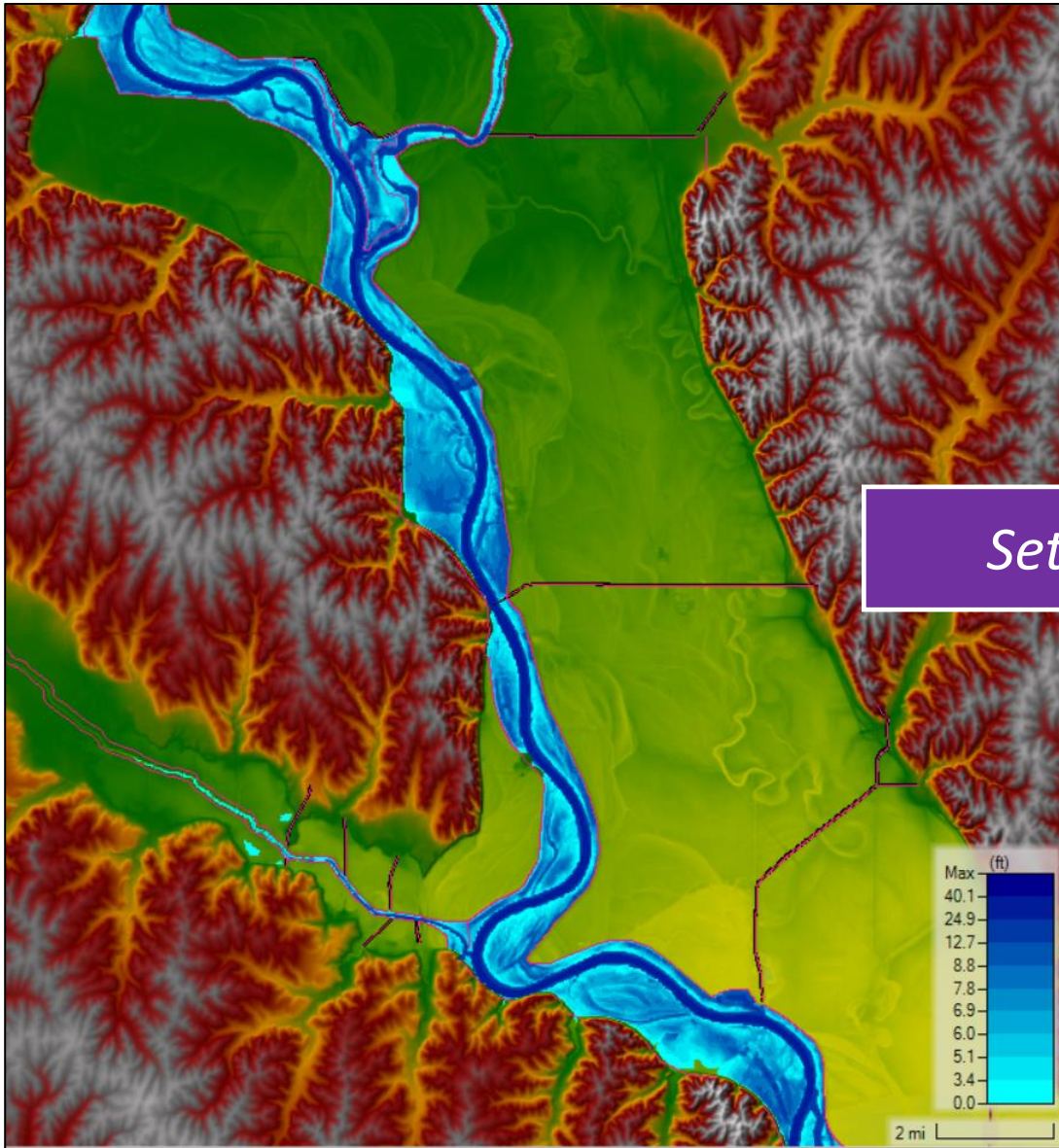
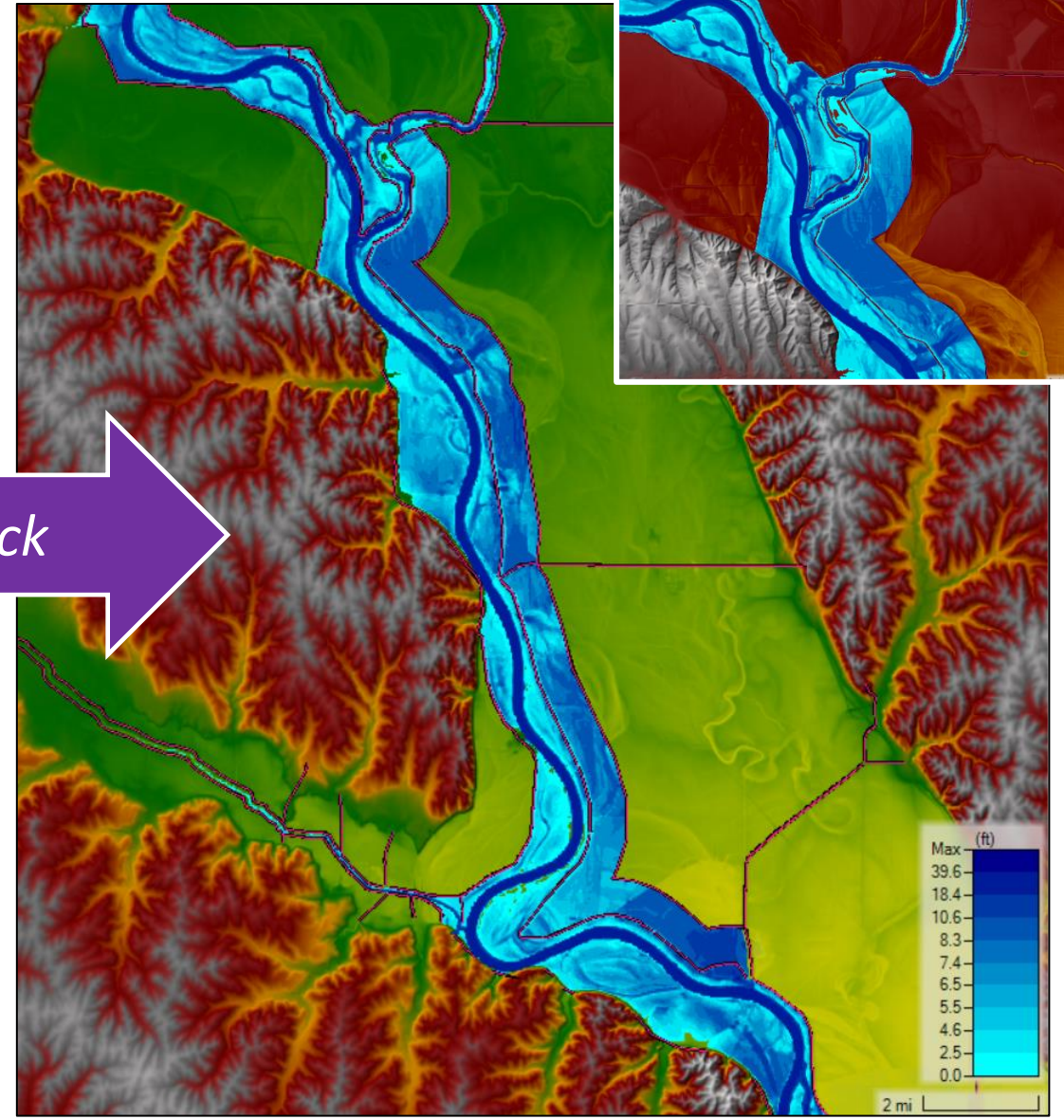


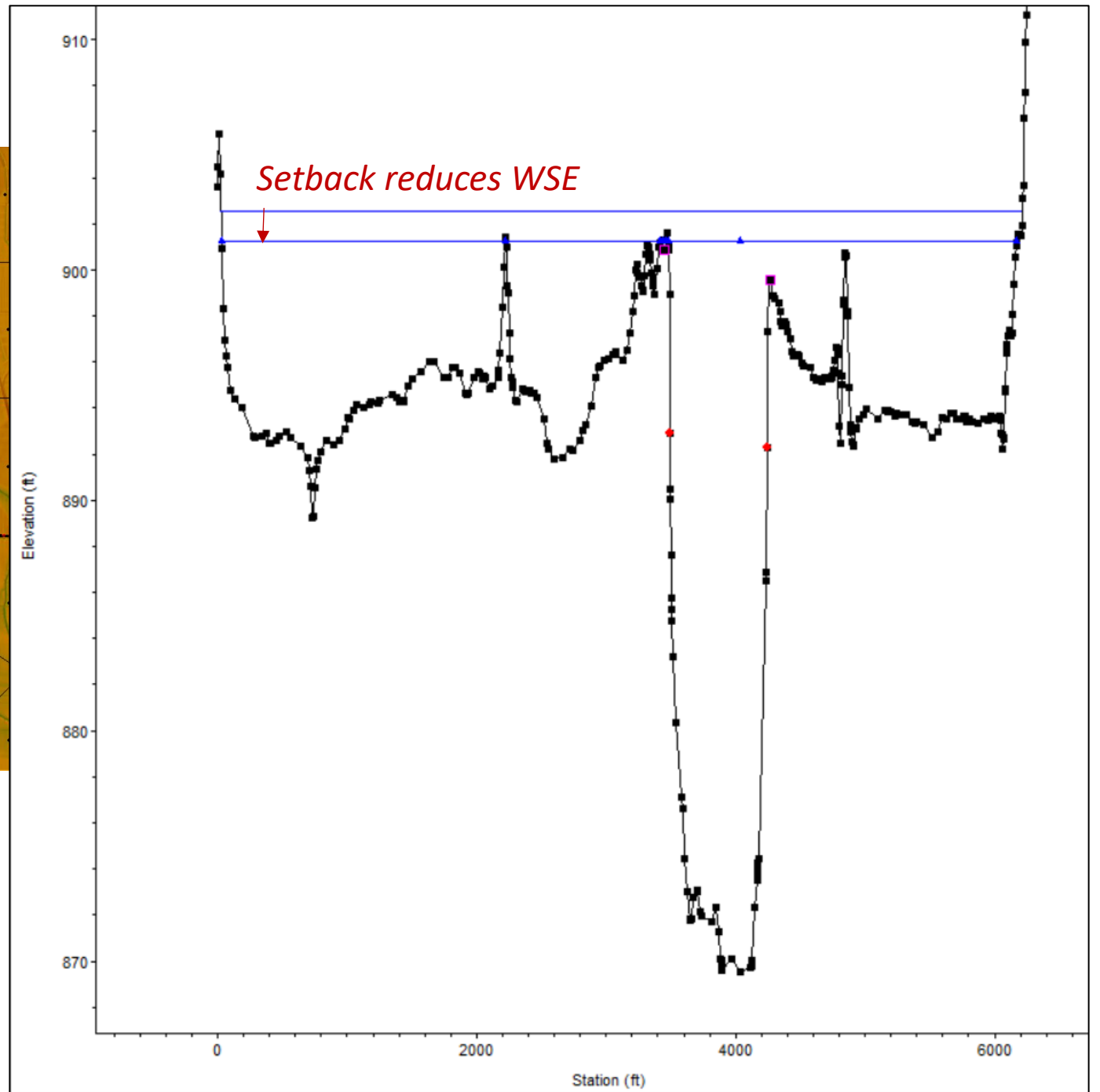
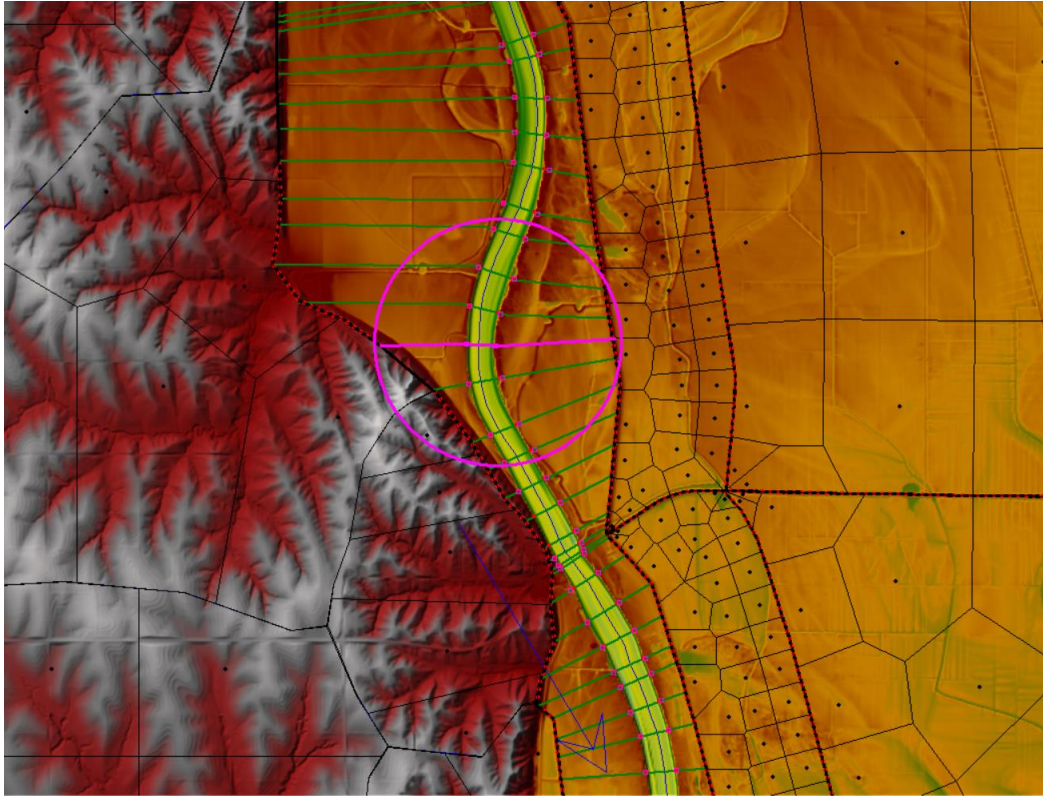
Flood Inundation Modeling



Setback

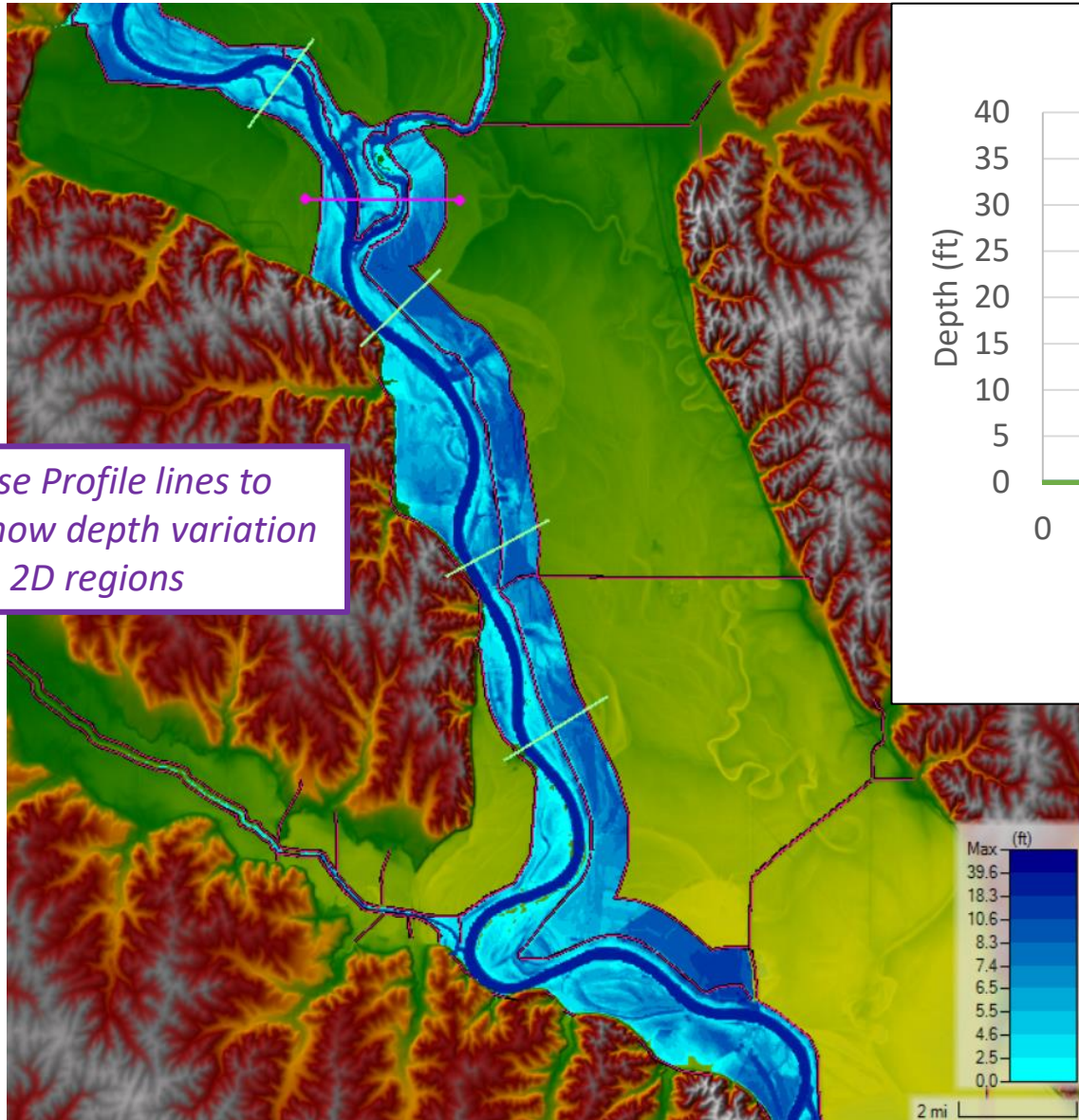


Channel Depth

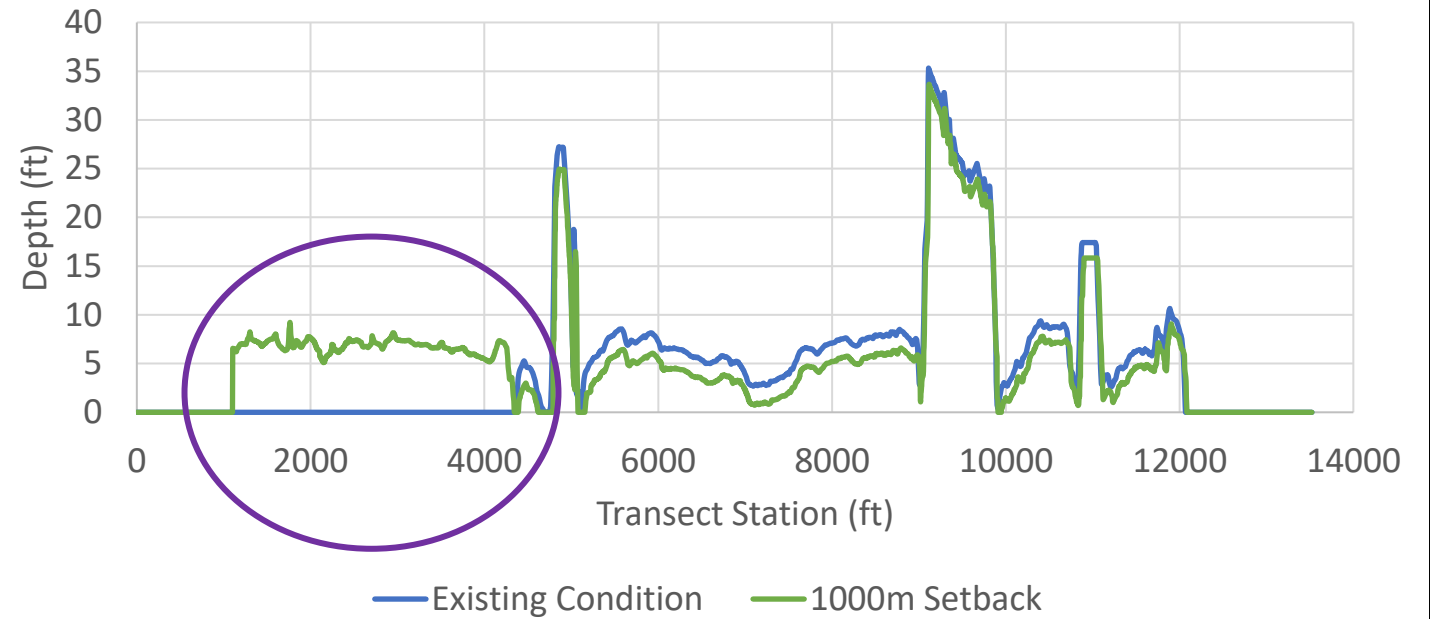


Novel setback modeling methods enables 2D floodplains and multiple benefit analysis (2D cell definitions tbd).

Floodplain Inundation

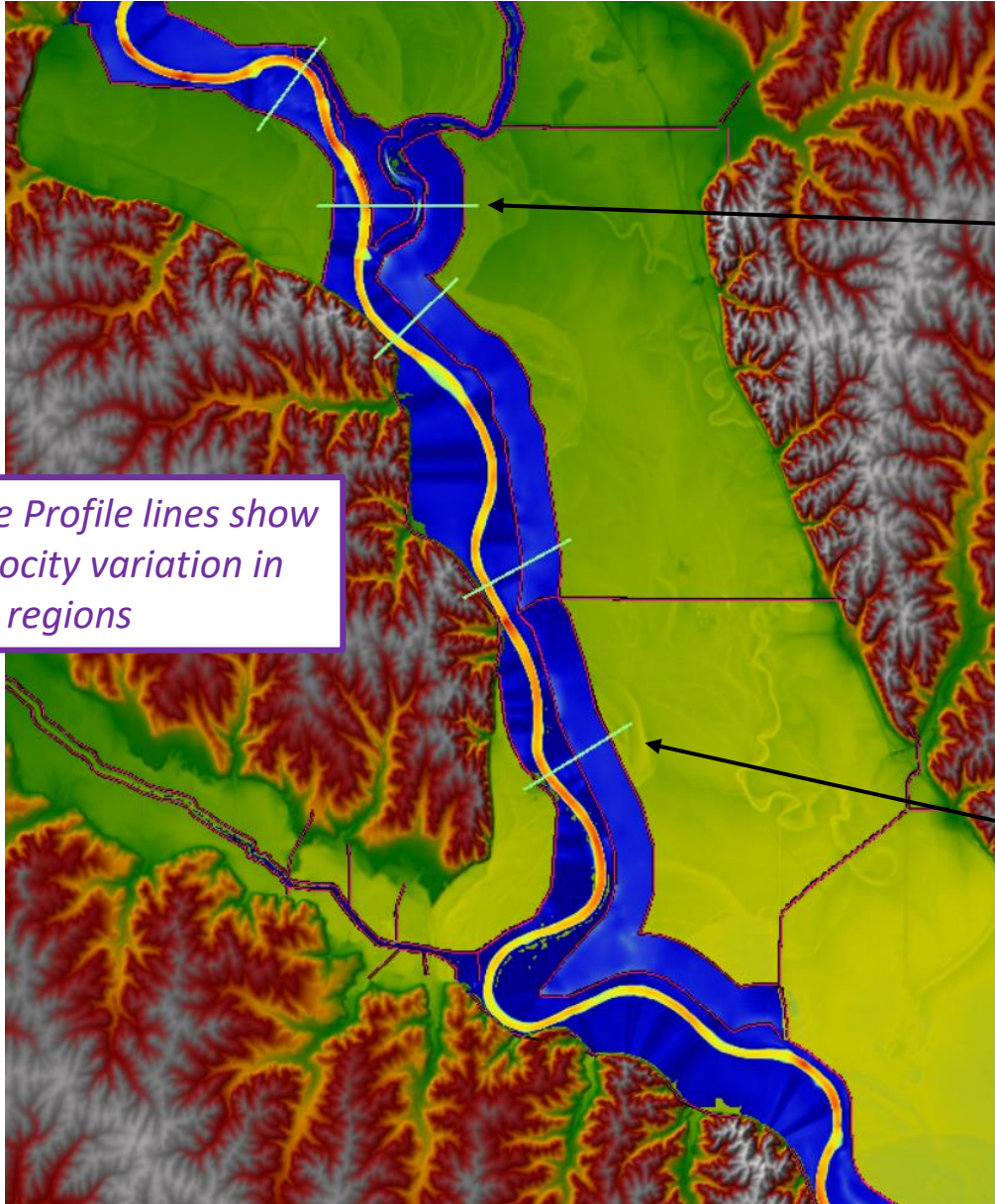


Depth Variation at Nishnabotna Confluence

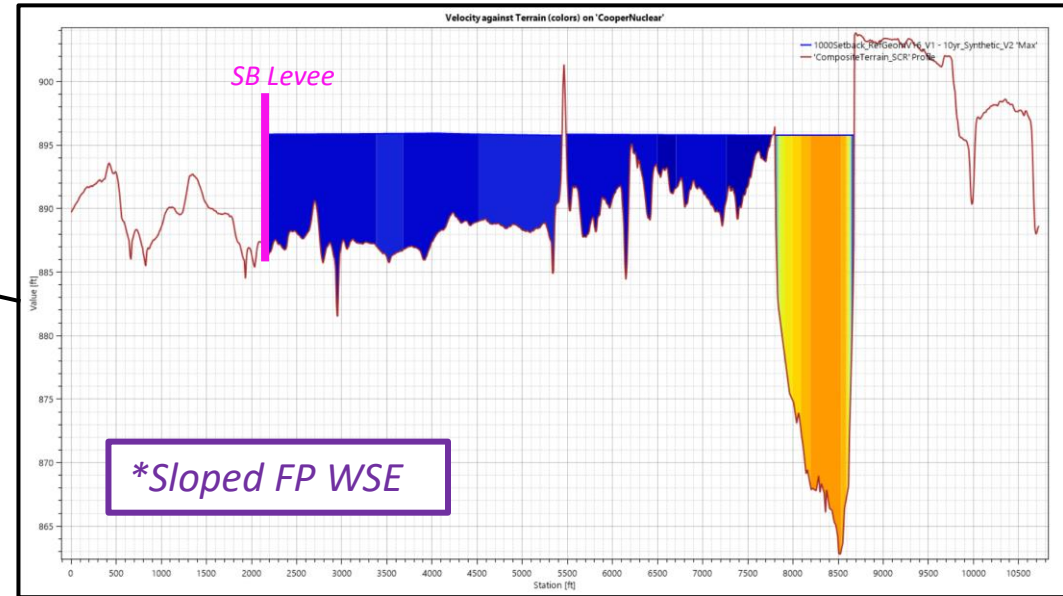
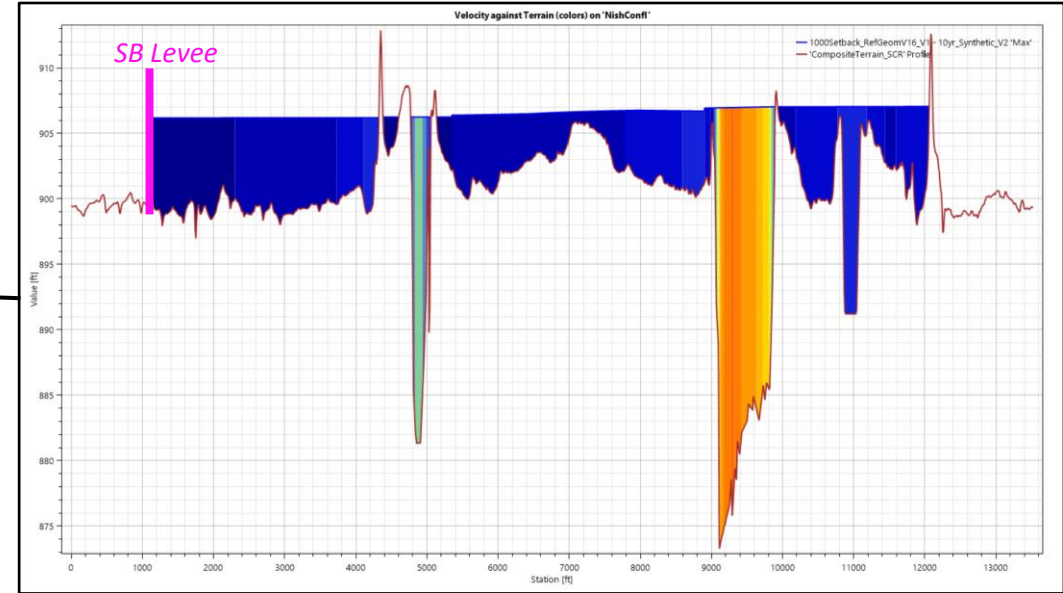


Note reconnected area of floodplain
AND
Depth variation across 1D and 2D elements

Velocity Variation

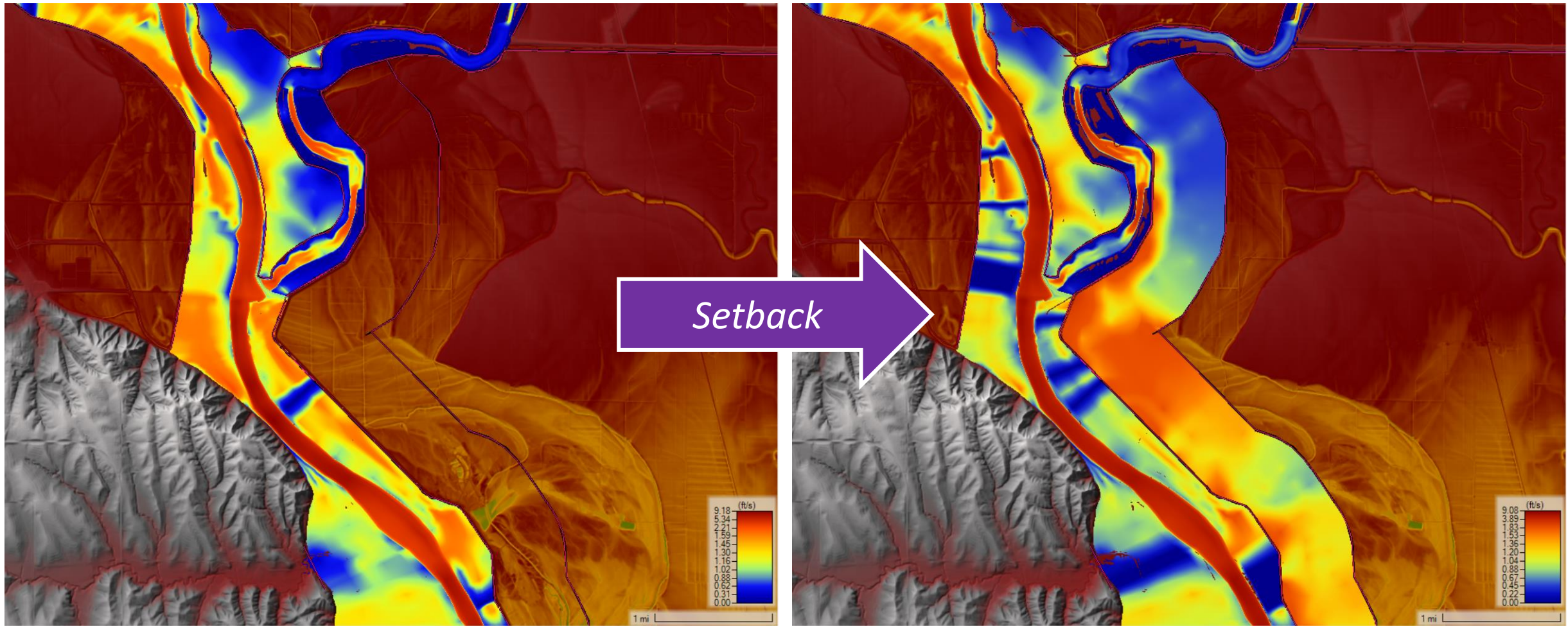


Use Profile lines show velocity variation in 2D regions



*Sloped FP WSE

Velocity Variation at Confluences



The setback creates velocity variation throughout the flow area.